

6.2.1 The Institutional has well defined organizational structure, Statutory Bodies/committees of the College with relevant rules, norms and guidelines along with Strategic Plan effectively deployed.

INDEX

S.NO	DESCRIPTION	PAGE NUMBER
1	Certificate of the Head of the Institution	02
2	Strategic Plan Documents	04


CERTIFICATE OF THE HEAD OF INSTITUTION

Dr.S. ELANCHEZHIAN, M.D.S.,
PRINCIPAL

TO WHOMSOEVER IT MAY CONCERN

This is to certify that, our Institutional has well defined organizational structure, Statutory Bodies/committees of the College with relevant rules, norms and guidelines along with Strategic Plan effectively deployed.




PRINCIPAL
Dr S ELANCHEZHIAN, MDS.,
J.K.K. NATTRAJA DENTAL COLLEGE & HOSPITAL
KUMARAPALAYAM, NAMAKKAL - 638 183.
JKKN
PRINCIPAL

STRATEGIC PLAN DOCUMENTS

**JKKN DENTAL COLLEGE AND HOSPITAL
STRATEGIC PLANNING AND DEVELOPMENT
From 1987-2018**



PRINCIPAL
Dr S ELANCHEZHIAN, MDS.,
J.K.K. NATTRAJA DENTAL COLLEGE & HOSPITAL
KOMARAPALAYAM, NAMAKKAL - 638 183.
JKKN TAMILNADU.

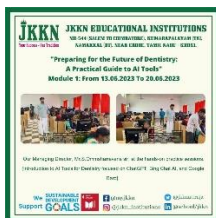
JKKN DENTAL COLLEGE AND HOSPITAL STRATEGIC PLANNING AND DEVELOPMENT From 2018-2023



PRINCIPAL

Dr S ELANCHEZHIAN, MDS.,
J.K.K. NATTRAJA DENTAL COLLEGE & HOSPITAL
KOMARAPALAYAM, NAMAKKAL - 638 183.
JKKN TAMILNADU.

JKKN DENTAL COLLEGE AND HOSPITAL STRATEGIC PLANNING AND DEVELOPMENT From 2023-2028



PRINCIPAL
Dr S ELANCHEZHIAN, MDS.,
J K K NATTRAJA DENTAL COLLEGE & HOSPITAL
KUMARAPALAYAM, NAMAKKAL - 638 183.
JKKN TAMILNADU.



ADDITIONAL INFORMATION

JKKN DENTAL COLLEGE AND HOSPITAL

S.No	Contents	Page No.
1	Strategic plan 2018-2019	06
2	Strategic plan- 2019-2020	08
3	Strategic plan-2020-2021	10
4	Strategic plan- 2021-2022	13
5	Strategic plan- 2022-2023	16
6	Strategic plan 2023-2024	21
7	Strategic plan 2024-2025	25
8	Future Strategic Plan 2028	27




PRINCIPAL
Dr S ELANCHEZHIAN, MDS.,
J.K.K. NATTRAJA DENTAL COLLEGE & HOSPITAL,
KUMARAPALAYAM, NAMAKKAL - 638 183.
JKKN TAMILNADU.

Strategic Plan 2018-19

1. Global excellence in dental education- The teaching and learning process was modified to solve the advanced oral health care needs of society utilizing the recent materials and methods. The global standards in dentistry were implemented and the faculty and students were encouraged to participate in the national and international level conferences and workshops for updating their knowledge for future dentistry.



Best outgoing student award for academic excellence

2 . Fostering Innovation- To promote innovation and for developing startups the innovation council for JKKNDCH was established under the guidance of Managing Director Thiru.S. Ommsharravana, The council consists of senior faculty members and students. This innovative establishment monitors the progress of innovation, it helps to convert the student ideas and prototypes into startups.

3. Developing creativity and Critical thinking- Dental students are encouraged to develop creativity and critical thinking ability in learning subjects through the process of continuous training and updated teaching and learning methods.



Training innovation through design thinking and creative thinking skills



PRINCIPAL
Dr S ELANCHEZHIAN, MDS.,
J K K. NATTRAJA DENTAL COLLEGE & HOSPITAL
KUMARAPALAYAM, NAMAKKAL - 638 183.
JKKN TAMILNADU.

4. Inculcating Research - Conduct research to establish measurable objectives that address key areas such as academic excellence, research, clinical practice, community engagement, and faculty development.

5. Enriched Curriculum for Paradigmatic Shift in Dentistry- The dental curriculum was modified and reinforced with new technologies, research methodologies, and advanced treatment options to establish realistic and achievable targets.

6. Comprehensive dental care with improved treatment outcome- The dental treatment was provided for the patients with guidelines and protocols based on the World Health Organization (WHO), Indian Dental Association (IDA) and Dental Council of India (DCI) that provide evidence-based recommendations for best practices in dental care.



Providing dental treatment with standard guidelines and protocols



PRINCIPAL

Dr S ELANCHEZHIAN, MDS.,
J.K.K. NATTRAJA DENTAL COLLEGE & HOSPITAL
KUMARAPALAYAM, NAMAKKAL - 638 183.
JKKN TAMILNADU.

Strategic Plan - 2019-2020

1.Build a Culture of Innovation: An establishment that encourages and rewards innovation becomes mandatory for the fast-growing dental field. This includes creating an environment where faculty, researchers, and students are encouraged to identify the existing problems in dentistry, think creatively, take risks, and explore new ideas. Encourage open communication, collaboration, and continuous learning among all stakeholders.

2.Enhance the Curriculum with a design thinking process: Review and revise the curriculum by applying the principles of the design thinking process to integrate innovative approaches. Incorporate courses or modules, conduct hands-on sessions, creating empathy maps that focus on emerging technologies, research methodologies, entrepreneurship, and critical thinking. Encourage faculty to explore innovative teaching methods, such as problem-based learning, simulation-based training, and digital resources.



Appreciation of students for achievements in design thinking process

3.Evaluation and improvement of innovation in dentistry

Continuous evaluation of the effectiveness of the strategies implemented to develop innovation in the dental college. Monitor key performance indicators, gather feedback from stakeholders, make necessary arrangements to develop and incubate the startups, and identify the investors and marketing strategy as needed. Embrace a culture of continuous improvement to ensure long-term success.

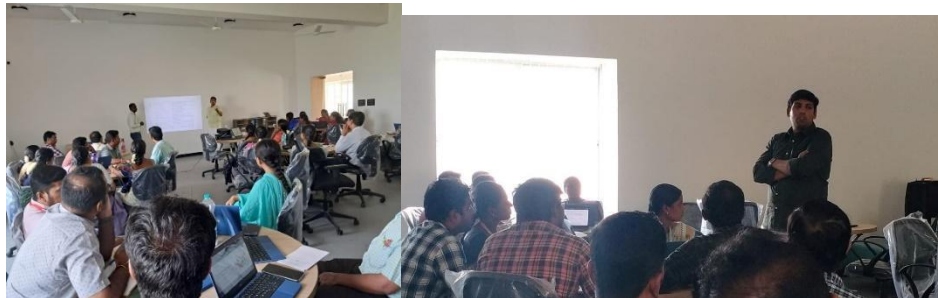


Best prize for innovative solutions in Startup TN and Startup Mania events



4.Encourage Continuing Education: Promote a culture of continuous learning and professional development among faculty, staff, and students. Organizing workshops, conferences, and seminars on innovative topics, inviting renowned speakers like entrepreneurs and thought leaders from the dental and healthcare industries. Offer incentives for faculty and staff to attend conferences or pursue advanced degrees in innovative fields.

5.Foster a Research Culture: Encourage undergraduate and postgraduate students, and faculty members to engage in research activities, and guided research projects. Establishing research methodology programs to guide students in their research pursuits. Encourage collaborative research projects among different specialties and with other dental, medical, pharmacy, nursing, engineering and other institutions.



Training to faculty members to encourage dental students for research works

6.Establish Clinical Research Programs: Creating opportunities for learning students to engage in clinical research, including retrospective studies, clinical trials, and longitudinal studies. Encourage the postgraduate students to publish of research findings in peer-reviewed journals, PubMed indexed, Scopus indexed journals, and the presentation of research at conferences and symposiums. By Collaborating with industry partners, dental labs, and renowned dental hospitals to conduct clinical trials and evaluate new dental materials and technologies.

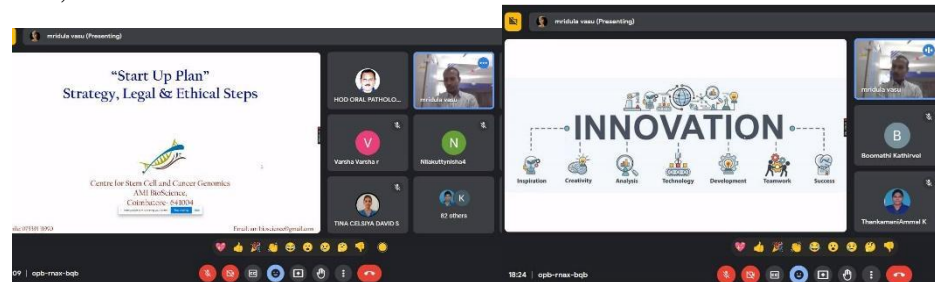


PRINCIPAL

Dr S ELANCHEZHIAN, MDS.,
J.K.K. NATTRAJA DENTAL COLLEGE & HOSPITAL
KUMARAPALAYAM, NAMAKKAL - 638 183.
JKKN TAMILNADU.

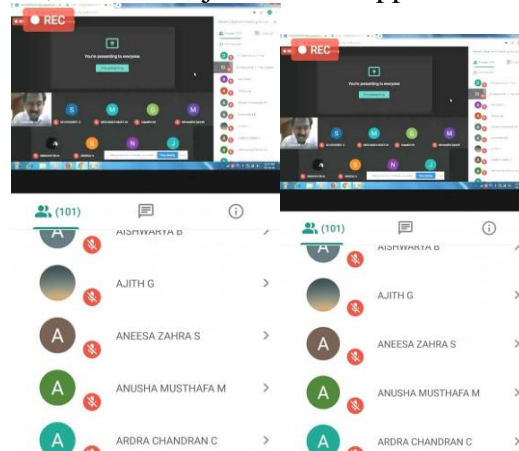
Strategic Plan 2020-2021

- 1. Achieving proficiency in handling Google tools**, the teaching faculty members, students, non-teaching staff members were given training for handling and proper utilization of Google tools like G Meet, G Classroom, G Docs, G Forms, G Calendar, G Suits, G sheets, Jamboard. etc.
- 2. Transition to Online Learning:** Establish a robust online learning platform or Learning Management System (LMS) to facilitate remote dental education. Provide faculty and students with training and technical support to effectively utilize online teaching tools and resources. Adapt the existing curriculum to suit online delivery, ensuring the integration of interactive learning materials, virtual simulations, and multimedia resources.



Online education through Google Meet for dental students in JKKNDCH

- 3. Enhance Virtual Teaching Methodologies:** Encouraging faculty members to identify and explore innovative teaching methods suitable for online instruction, such as recorded lectures, live webinars, and virtual case discussions. Promotion of active learning methodologies through virtual group discussions, collaborative projects, and online problem-solving exercises. Provide students with access to digital libraries, e-books, and online journals to support self-directed learning.



PRINCIPAL
Dr S ELANCHEZHIAN, MDS.,
J K K. NATTRAJA DENTAL COLLEGE & HOSPITAL
KUMARAPALAYAM, NAMAKKAL - 638 183.
TAMILNADU.

Online education enhanced with innovative teaching methods

- 4. Develop Virtual Clinical Training:** Establish virtual patient simulation platforms that allow students to visualize, learn, and practice clinical procedures remotely. Utilization of 3D dental models, virtual reality (VR) applications, and augmented reality (AR) tools to simulate clinical

scenarios and enhance hands-on training in preclinical and clinical procedures. Collaborate with dental software technology providers to offer remote access to advanced dental software for treatment planning and simulation.



Virtual clinical society meeting and career guidance training

5. Remote Assessment and Evaluation: Implementation of online assessment methods, including quizzes, assignments, and online examinations, to evaluate students' knowledge and skills. By utilization of video conferencing tools for oral examinations, case presentations, and clinical competency assessments. Development of objective-based evaluation criteria and rubrics for assessing virtual clinical simulations and patient case discussions.

6. Strengthen Communication and Support: Establish regular communication channels between faculty, students, and administration to address concerns, provide updates, and foster a sense of community. Offer virtual office hours and one-on-one sessions to support student learning and address individual needs. Provide mental health and well-being resources to help students cope with the challenges of remote learning and the pandemic.

7. Faculty Development and Training: Organise faculty development programs focused on online teaching methodologies, virtual clinical training, and effective use of educational technology during pandemics. Facilitate peer-to-peer sharing of best practices and encourage collaboration among faculty members in designing and delivering online courses to students. Support faculty members in conducting research and publishing educational resources related to promoting remote dental education.

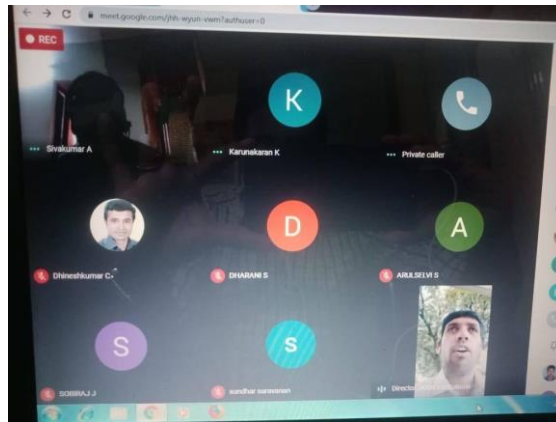
8. Collaborate with Dental Associations and Institutions: Engage with dental associations like the Indian Dental Association, professional organizations, and other dental institutions to share resources, experiences, and best practices in remote dental education. Explore opportunities for virtual guest lectures, webinars, and online workshops conducted by experts in various dental specialties. Collaboration with industry partners to provide online access to dental software, treatment planning tools, and educational resources.



PRINCIPAL
Dr S ELANCHEZHIAN, MDS.,
J.K.K. NATTRAJA DENTAL COLLEGE & HOSPITAL
KUMARAPALAYAM, NAMAKKAL - 638 183.
TAMILNADU.

Department of Prosthodontics in JKKN DCH participated in an Online drawing and art competition by the Prosthodontics society

9. Continuous Monitoring and Improvement: Continuously monitoring the progress in academics and gathering feedback from faculty and students regarding the effectiveness of remote dental education strategies. To collect and analyze data on student performance, engagement, and satisfaction to identify areas for improvement. Regularly update the strategic plan based on feedback, emerging technologies, and evolving best practices.



Virtual parents teachers' meeting conducted for students from First BDS to Final year BDS




PRINCIPAL
Dr S ELANCHEZHIVAN, MDS.,
J K K. NATTRAJA DENTAL COLLEGE & HOSPITAL
KUMARAPALAYAM, NAMAKKAL - 638 183.
JKKN TAMILNADU.

STRATEGIC PLAN - 2021-2022

1.Infrastructure assessment - Assess the existing infrastructure and facilities in the dental college to determine areas that require improvement or investment for better accreditation and recognition, improved education and patient management.



Assessment of infrastructure during pandemic situation for safety dental procedures

2.Establish professional development programs to keep faculty members updated on new treatment modalities, research findings, and best practices. To promote students' learning process with better understanding and clinical exposure.



Clinical training program in facial aesthetic surgery.

3.Encourage faculty engagement in research and publication to promote evidence-based treatment approaches, scientific approaches in patient management, and excellence in dental education.



Faculty training program for research and publication


PRINCIPAL
Dr S ELANCHEZHIAN, MDS.,
J. K. K. NATTRAJA DENTAL COLLEGE & HOSPITAL
KUMARAPALAYAM, NAMAKKAL - 638 183.
JKKN TAMILNADU.

4.Foster a culture of interprofessional education with a holistic and multi disciplinary approach to enhance collaboration and teamwork among dental students and other healthcare professionals.



Women's Day celebration with poster and paper presentation for women's welfare

5. Patient-centred treatment care by improving communication with the neighboring rural community, conducting research in advanced patient management strategies obtaining feedback regarding their satisfaction with the treatment approach, and identifying the areas of improvement.



OSCE based assessment for patient-centered learning



PRINCIPAL

Dr S ELANCHEZHIAN, MDS.,
J K K NATTRAJA DENTAL COLLEGE & HOSPITAL
KUMARAPALAYAM, NAMAKKAL - 638 183.
TAMILNADU.

6.Systematic and progressive quality improvement in education, administration, accreditation, patient management, research, innovation, curricular and extracurricular activities through the Internal Quality Assurance mechanism. Establishment of IQAC with the respective committees for monitoring and evaluating the quality improvements of the dental college.



Training in Intraoral scanners for undergraduate students for improved patients outcomes




PRINCIPAL
Dr S ELANCHEZHIAN, MDS.,
J K K. NATTRAJA DENTAL COLLEGE & HOSPITAL
KUMARAPALAYAM, NAMAKKAL - 638 183.
JKKN TAMILNADU.

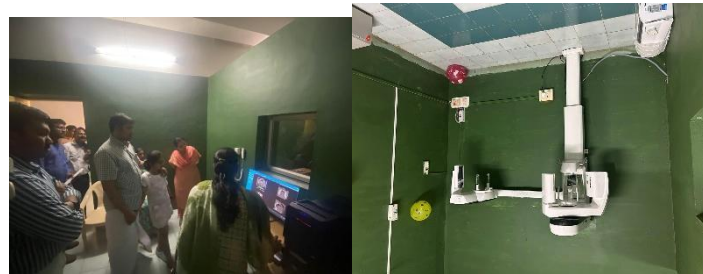
STRATEGIC PLAN - 2022-2023

1.Implementation of Quality Assurance Measures: Establishing mechanisms for quality assurance and continuous improvement in curricular and extracurricular activities. Monitor the progress and outcomes of staff and student's academic, and research projects and clinical experiences. Collect feedback from stakeholders and patients to identify areas for improvement and implement appropriate changes.



Quality enhancement training and seminars for both faculty and students

2.Strengthening Industry Partnerships: Establishing collaborations and creating MOUs with dental product manufacturers, dental service organizations, and dental clinics to provide real-world exposure and opportunities.Fostering sponsored research projects, internships, and externships to bridge the gap between academia and industry. Involving in industry partnership for curriculum enhancement to ensure alignment with current needs and technological advancements in dentistry.



Inauguration of CBCT Imaging in Oral medicine and radiology department of JKKN DCH



PRINCIPAL

Dr S. ELANCHEZHIAN, MDS.,
J.K.K. NATTRAJA DENTAL COLLEGE & HOSPITAL
KOMARAPALAYAM, NAMAKKAL - 638 183.
JKKN TAMILNADU.

Training for marketing fit and problem-solution methods for Innovation Council students



Mobile dental clinic inauguration for remote dental treatment to enhance rural healthcare

3.Promote Interdisciplinary Collaboration: Fostering collaboration between students and faculty members from different dental specialties as well as other healthcare disciplines. Encouraging joint research projects, seminars, case discussions, and workshops to promote knowledge sharing and interprofessional learning. Developing partnerships with medical, pharmacy, nursing, engineering departments, and other relevant institutions to encourage interdisciplinary research.



JKKNDCH collaboration with nursing college and allied health science college for blood donation camp and educational programs

4.Achieving the highest benchmarks in NAAC: Conduct a self-study to identify the strengths and weaknesses, need to set SMART goals to achieve the highest benchmark in the NAAC. This may involve faculty development programs, improving infrastructure, or strengthening student support services. Allocate necessary resources (budget, personnel) for implementing the action plan. Regularly monitor progress, identify gaps, and make adjustments to the plan as needed. Foster a collaborative culture where faculty, staff, and students work together towards achieving NAAC excellence.



PRINCIPAL
Dr. S. ELANCHEZHIAN, MDS.,
J. K. K. NATTRAJA DENTAL COLLEGE & HOSPITAL,
KUMARAPALAYAM, NAMAKKAL - 638 183,
TAMILNADU.

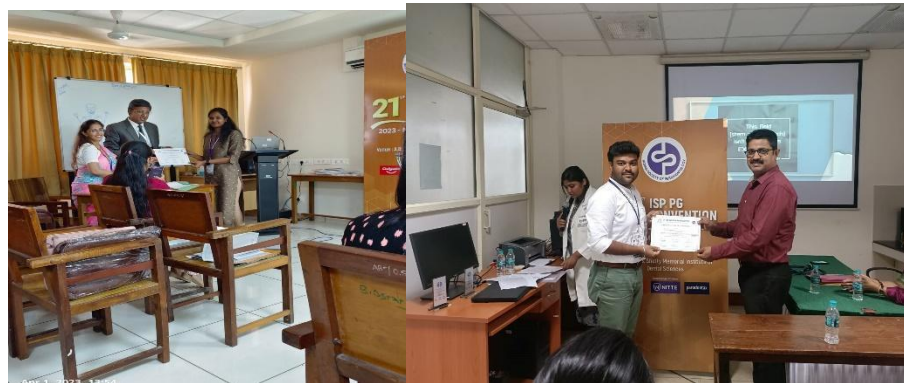


Educating the Faculty members and students for achieving the highest benchmarks in NAAC for improved Accreditation and recognition.



Students participate in various lectures and seminars outside the college for excellence in dental education and research

5.Expand Research Funding Opportunities: Seek external and internal funding from institutions, government agencies, foundations, and industry sponsors to support research endeavors. Establish internal grants and fellowships specifically for postgraduate students to promote research excellence in their specialty. Collaborate with funding agencies to create research opportunities aligned with national or regional dental healthcare priorities.



PRINCIPAL

Dr S ELANCHEZHIAN, MDS.,
J.K.K. NATTRAJA DENTAL COLLEGE & HOSPITAL
KOMARAPALAYAM, NAMAKKAL - 638 183.
JKKN TAMILNADU.



Participation in National level specialty seminars and research methodology workshops for the promotion of research and innovation

6. Curriculum Enhancement : Review and revise the dental curriculum to incorporate advanced clinical procedures and techniques, to obtain the improved clinical and theoretical outcomes from students . Update the syllabi, learning objectives, and instructional methodologies to align with the latest advancements in the identified clinical areas in dentistry. Integrate hands-on training, clinical case discussions, and simulated patient exercises to provide practical experience and enhance clinical decision-making skills. Foster interdisciplinary collaboration for incorporating joint clinical sessions with other dental specialties or healthcare disciplines to promote comprehensive patient care like implant rehabilitation, orthognathic surgery, facial reconstructive surgery and oral cancer management.



Department day celebration for curriculum enhancement and for updating knowledge in advanced treatment procedures

7. Clinical Mentoring and Case Discussions: Establish a structured mentoring program and training sessions with experienced faculty members or expert clinicians to provide guidance and supervision for students during advanced clinical procedures. Organize regular case discussions, seminars, and journal clubs to facilitate the exchange of knowledge and best practices among faculty members and students in the college. Encourage students to present their advanced clinical cases to the faculty and peers, specialty conferences for promoting critical thinking and peer learning.



PRINCIPAL

Dr S ELANCHEZHIAN, MDS.,
J K K. NATTRAJA DENTAL COLLEGE & HOSPITAL
KUMARAPALAYAM, NAMAKKAL - 638 183.
JKKS TAMILNADU.



Clinical consortium and OSCE-based training for undergraduates and post-graduate students

8. Identify Advanced Clinical Areas : Identify the specific advanced clinical procedures and techniques that the dental college aims to incorporate according to the learning objectives . This may include areas such as implant dentistry, esthetic dentistry, endodontics, orthodontics, oral surgery, or other specialised fields.



Encouragement of students to learn advanced treatment procedures by providing opportunities to attend National and International level seminars and workshops



PRINCIPAL
Dr S ELANCHEZHIAN, MDS.,
J K K. NATTRAJA DENTAL COLLEGE & HOSPITAL
KUMARAPALAYAM, NAMAKKAL - 638 183.
JKKN TAMILNADU.

STRATEGIC PLAN 2023-24

Strategic Plan for JKKN Dental College and Hospital (2023-24)

Strategic Plan Aligned with the Vision of Producing Leading Global Innovative Solutions Providers

Objective: Utilising AI technology to revolutionize teaching and learning experiences, enhance patient management processes, and optimize diagnosis and treatment planning at JKKN Dental College, thereby fostering the development of leading global innovative solutions providers.

Vision Alignment and Goal Setting:

- Ensure that the strategic plan aligns with the college's vision of producing leading global innovative solutions providers.
- Set specific goals and milestones to measure the success of AI integration in teaching, patient management, diagnosis, and treatment planning.

Incorporate AI to the Center of Excellence of the department :

- Create a Center of Excellence within the college dedicated to driving innovation and research in AI applications in various branches of dentistry. ● Staff the center with experts in AI, dentistry, and related fields.
- Foster a culture of collaboration, creativity, and innovation within the center.

Collaborations and Partnerships:

- Forge strategic partnerships with industrialists and educationalists,
- AI research institutes, and dental technology companies.
- Engage in joint research projects and knowledge-sharing initiatives. ● Leverage partnerships to access cutting-edge AI tools, technologies, and expertise.

Curriculum Enhancement:

- Integrate AI concepts, applications, and ethics into the dental curriculum. ● Develop specialized courses and training programs on AI in dentistry. ● Provide opportunities for students to engage in AI research projects and experiential learning.

AI-driven Initiatives for achieving the Vision and Mission of JKKN DCH

AI-driven Teaching and Learning:

- Implement AI-based platforms and tools for interactive and personalized learning experiences.



- Integrate virtual simulations, augmented reality, and virtual reality technologies into the curriculum.
- Foster a student-centred approach with AI-supported adaptive learning systems.

AI-powered Patient Management:

- Implement AI-driven systems for efficient patient scheduling, record-keeping, and communication.
- Develop chatbot systems and AI assistants to enhance patient interactions and support.
- Utilise AI algorithms to analyse patient data, detect patterns, and personalise treatment plans.

AI-enabled Diagnosis and Treatment Planning:

- Integrate AI-based image analysis tools for accurate and efficient radiographic interpretation.
- Develop AI algorithms for early detection of oral diseases and anomalies.
- Utilise machine learning models to predict treatment outcomes and optimise treatment plans.

Innovation and Entrepreneurship:

- Foster an entrepreneurial mindset among students and faculty.
- Encourage the development of AI-driven innovative solutions for dental challenges.
- Provide support for students and faculty interested in commercializing their AI-based ideas and inventions.

Continuous Professional Development:

- Offer regular training programs and workshops on AI advancements in dentistry for faculty and staff.
- Encourage faculty to engage in AI research, publications, and presentations at national and international forums.
- Facilitate participation in AI-focused conferences and seminars.

Monitoring, Evaluation, and Improvement:

- Establish metrics and key performance indicators to measure the effectiveness of AI implementations.
- Regularly assess the impact of AI on teaching, patient management, diagnosis, and treatment planning.
- Collect feedback from students, faculty, and patients to identify areas for improvement and make necessary adjustments.

Ethical and Responsible AI:



- Develop and adhere to ethical guidelines for the use of AI in dentistry. ● Ensure transparency, fairness, and accountability in AI algorithms and decision-making processes.
- Educate students on the ethical considerations and social impact of AI in dentistry.

By implementing this strategic plan, JKKN Dental College aims to harness the power of AI to produce leading global innovative solutions providers in dentistry.

The integration of AI in teaching, learning, patient management, diagnosis, and treatment planning will empower students and faculty to drive transformative change and contribute to the advancement of the field. As a result of this strategic plan, JKKN Dental College envisions the following outcomes:

Empowered and Innovative Graduates: Graduates from JKKN Dental College will be equipped with a deep understanding of AI applications in dentistry, making them innovative and tech-savvy professionals ready to embrace the digital transformation in the dental industry.

Enhanced Teaching and Learning: The integration of AI in the teaching process will enable personalized and adaptive learning experiences for students. AI-powered virtual simulations and augmented reality tools will enhance practical training, leading to a more comprehensive understanding of dental procedures.

Streamlined Patient Management: AI-driven patient management systems will ensure efficient and seamless scheduling, record-keeping, and communication with patients. This will result in improved patient satisfaction and better overall patient care. **Accurate Diagnosis and Treatment Planning:** By leveraging AI-based image analysis tools and machine learning algorithms, dentists at JKKN Dental College will be able to achieve more accurate and timely diagnoses. AI-driven treatment planning will lead to better treatment outcomes and increased patient success rates.

Cutting-Edge Research and Innovation: The establishment of an AI Center of Excellence will foster a culture of research, innovation, and collaboration. The college will be at the forefront of AI-related research in dentistry, leading to the development of novel solutions and technologies.

Industry Partnerships and Recognition: Collaborations with industry leaders and research institutes will provide access to the latest AI technologies and expertise. JKKN Dental College's commitment to AI-driven advancements will garner recognition from the dental community and beyond.

Entrepreneurial Mindset: Encouraging an entrepreneurial mindset among students and faculty will lead to the creation of AI-driven start-ups and ventures in the dental industry. This will contribute to economic growth and job creation.



Ethical AI Practices: The college's emphasis on ethical AI use will ensure responsible and transparent AI implementations. Students will be equipped with the knowledge to address ethical challenges in AI applications and uphold high ethical standards.

Global Reputation: With its focus on producing leading global innovative solutions providers, JKKN Dental College will earn a reputation for excellence in AI-driven dentistry education, patient care, and research.

Continuous Improvement and Adaptation: Regular monitoring and evaluation will allow the college to adapt its AI initiatives based on feedback and emerging technologies. This iterative process will ensure the effectiveness and sustainability of AI integration.

Through the successful implementation of this strategic plan, JKKN Dental College will become a pioneer in AI-driven dentistry education and practice, producing graduates who are well-prepared to embrace the digital era and lead the dental industry's transformation. By aligning with the vision of producing leading global innovative solutions providers, the college will contribute significantly to the advancement of dentistry and improve oral healthcare worldwide




PRINCIPAL
Dr. S. ELANCHEZHIAN, MDS.,
J.K.K. NATTRAJA DENTAL COLLEGE & HOSPITAL
KUMARAPALAYAM, NAMAKKAL - 638 183.
JKKN TAMILNADU.

STRATEGIC PLAN 2024-25

Strategic plan for JKKN Dental College and Hospital in 2024-25:

Introducing AI to Dental Education:

The curriculum enhancement will not only focus on theoretical aspects but also on practical applications of AI in dentistry.

Faculty members will receive training and professional development opportunities to stay updated with the latest AI advancements.

Collaborations with industry experts and research institutions will provide access to cutting-edge AI technologies and expertise.

AI-Driven Dental Treatment:

The implementation of AI-powered imaging analysis systems will enable faster and more accurate diagnosis of dental conditions.

Machine learning algorithms will be trained on vast datasets to improve the detection of early signs of oral diseases, leading to early intervention and improved patient outcomes.

AI will assist in treatment planning by analyzing patient data and providing personalized recommendations for orthodontics, prosthodontics, and oral surgery.

Virtual reality and augmented reality technologies will offer realistic simulation environments for students to practice dental procedures before treating actual patients.

Digital smile design and restoration planning using AI-driven software will enhance the precision and aesthetics of dental treatments.




PRINCIPAL
Dr S ELANCHEZHIAN, MDS.,
J K K. NATTRAJA DENTAL COLLEGE & HOSPITAL
KUMARAPALAYAM, NAMAKKAL - 638 183.
JKKN TAMILNADU.

Digitized Campus and Futuristic Learning:

The smart infrastructure will provide a technologically advanced environment for both students and faculty, facilitating seamless connectivity and access to digital resources.

Blended learning approaches will combine traditional classroom teaching with online platforms, enabling flexible and self-paced learning.

The digital library will offer a vast collection of resources, including e-books, journals, and research databases, accessible anytime, anywhere.

Emerging technologies such as 3D printing and robotics will be integrated into the curriculum, allowing students to gain practical experience in innovative dental techniques.

Precise Patient Treatment:

The implementation of electronic health records (EHR) systems will ensure efficient management and retrieval of patient data, promoting seamless communication among healthcare providers.

AI algorithms will analyze patient data to identify patterns, predict treatment outcomes, and support evidence-based decision-making.

Personalized treatment approaches will consider individual patient characteristics, preferences, and medical history, optimizing treatment plans for better results.

Continuous monitoring and feedback mechanisms will enable the collection of patient experiences and satisfaction data, leading to continuous improvement in service quality.

Overall, the strategic plan aims to leverage AI in various aspects of dental education and treatment, creating a digitalized and technologically advanced ecosystem that enhances learning outcomes, patient care, and overall dental practice. By embracing AI and emerging technologies, JKKN Dental College and Hospitals will position themselves at the forefront of dental innovation and provide students with the necessary skills to excel in the future of dentistry.




PRINCIPAL
Dr S ELANCHEZHIAN, MDS.,
J K K. NATTRAJA DENTAL COLLEGE & HOSPITAL
KUMARAPALAYAM, NAMAKKAL - 638 183.
JKKN TAMILNADU.

FUTURE STRATEGIC PLANS FOR 2025-2028

Strategic Plan for JKKN Dental College and Hospital (2025-2026)

Objective 1: Bioconvergence and Innovation-

1.1. Collaborative Research:

- Foster interdisciplinary collaborations between dental, medical, and engineering departments to promote bio convergence in dental sciences.
- Encourage joint research projects focusing on the integration of nanotechnology, robotics, and AI in dentistry.
- Establish partnerships with industry leaders, startups, and research institutions to foster innovation and technology transfer.

1.2. Innovation Hub:

- Establish an innovation hub within the dental college to facilitate the development and testing of novel dental technologies.
- Provide resources, mentorship, and funding opportunities for students and faculty to pursue entrepreneurial ventures in dental innovation.
- Organise regular innovation challenges, hackathons, and ideation workshops to stimulate creativity and problem-solving skills.

1.3. Intellectual Property Management:

- Implement strategies to protect intellectual property generated through research and innovation activities.
- Establish mechanisms for patent filing, technology licensing, and commercialization of dental innovations.
- Create a dedicated technology transfer office to facilitate collaborations between academia and industry for the translation of research into commercial products.




PRINCIPAL
Dr S ELANCHEZHIAN, MDS.,
J K K NATTRAJA DENTAL COLLEGE & HOSPITAL
KUMARAPALAYAM, NAMAKKAL - 638 183.
JKKN TAMILNADU.

STRATEGIC PLAN FOR JKKN DENTAL COLLEGE AND HOSPITAL (2026-2027)

Objective 2: Nanotechnology and Robotics in Dentistry

2.1. Nanomaterials in Dental Treatments:

- Explore the use of nanomaterials for enhanced dental restorations, drug delivery systems, and antimicrobial applications.
- Incorporate nanotechnology-based biomaterials into the curriculum, providing students with an understanding of their applications and benefits.
- Collaborate with nanotechnology researchers to develop and optimize dental materials with improved properties and performance.

2.2. Robotics-Assisted Dental Procedures:

- Integrate robotics technology into dental surgeries, implant placement, and complex procedures to enhance precision and reduce human error.
- Develop robotic systems for minimally invasive interventions, improving patient comfort and recovery time.
- Train students in the use of robotic platforms through hands-on experiences and simulation-based training.

Objective 3: Dental Learning with Augmented and Virtual Reality

3.1. Augmented Reality (AR) in Dental Education:

- Implement AR-based learning tools and applications to provide interactive and immersive educational experiences.
- Utilise AR for virtual anatomy exploration, dental simulations, and interactive 3D visualizations of dental structures.
- Develop AR modules for real-time guidance during dental procedures, enabling students to observe and learn from expert dentists.

3.2. Virtual Reality (VR) in Dental Training:

- Create VR environments for realistic dental procedure simulations, allowing students to practice in a safe and controlled setting.
- Develop VR-based training modules for dental anatomy, treatment planning, and surgical techniques.
- Utilise haptic feedback systems in VR simulations to provide a tactile experience, enhancing the realism of dental training.




PRINCIPAL
Dr S ELANCHEZHIAN, MDS.,
J.K.K. NATTRAJA DENTAL COLLEGE & HOSPITAL
KUMARAPALAYAM, NAMAKKAL - 638 183.
JKKN TAMILNADU.

STRATEGIC PLAN FOR JKKN DENTAL COLLEGE AND HOSPITAL (2027-2028)

Objective 4: Future-Oriented Dental Practice

4.1. Digital Dentistry Integration:

- Implement fully digital workflows, including digital impressions, computer-aided design/computer-aided manufacturing (CAD/CAM) systems, and 3D printing for prosthetics and orthodontic appliances.
- Train students in digital dentistry techniques, enabling them to embrace the digital transformation of dental practice.
- Establish collaborations with dental technology providers to stay updated with the latest advancements in digital dentistry.

4.2. Tele-dentistry and Remote Monitoring:

- Develop tele-dentistry platforms to provide remote consultation, diagnosis, and treatment planning services to patients in underserved areas.
- Utilise AI algorithms for image analysis and remote monitoring of oral health conditions.
- Enable patients to remotely access their dental records, receive treatment updates, and access educational resources through secure online portals.

4.3. Ethical and Social Considerations:

- Incorporate ethical guidelines and discussions on the responsible use of emerging technologies in dental practice.
- Promote patient privacy and data security measures in the adoption of digital and AI-driven systems.
- Foster awareness of the social impact of dental technologies, addressing issues of accessibility, equity, and affordability.

By implementing this strategic plan, JKKN Dental College and Hospitals will position themselves as a leader in bioconvergence, innovation, and future-oriented dental practice. The integration of nanotechnology, robotics, augmented reality, and virtual reality will revolutionize dental education, research, and patient care, preparing students to thrive in the rapidly evolving dental landscape of 2030.




PRINCIPAL
Dr S ELANCHEZHIAN, MDS.,
J.K.K. NATTRAJA DENTAL COLLEGE & HOSPITAL
KUMARAPALAYAM, NAMAKKAL - 638 183.
JKKN TAMILNADU.